

Supplementary Appendix
**Self-Interested Citizens: How Disaster Victims Modify
their Political Priorities**

Giancarlo Visconti*

Purdue University

June 14, 2018

*Department of Political Science, Purdue University, 100 N University St, West Lafayette, IN 47907, email:
gviscont@purdue.edu.

Contents

1	Appendix A: Fine Balance Before Matching	3
2	Appendix B: Fine Balance After Matching	5
3	Appendix C: Imbalances on Age	7
4	Appendix D: Imbalances on Education	8
5	Appendix E: Descriptive Statistics Before Matching	9
6	Appendix F: Descriptive Statistics After Matching	10

1 Appendix A: Fine Balance Before Matching

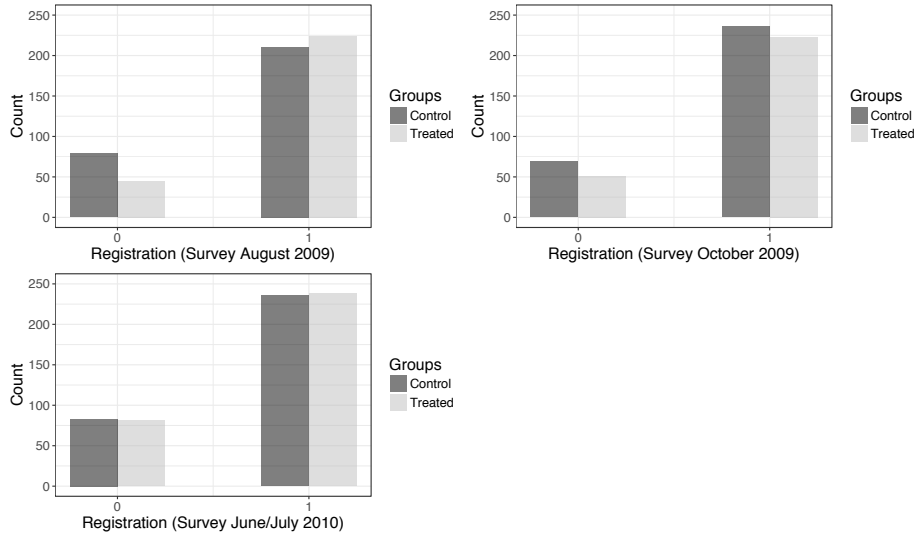


Figure A1: Registration

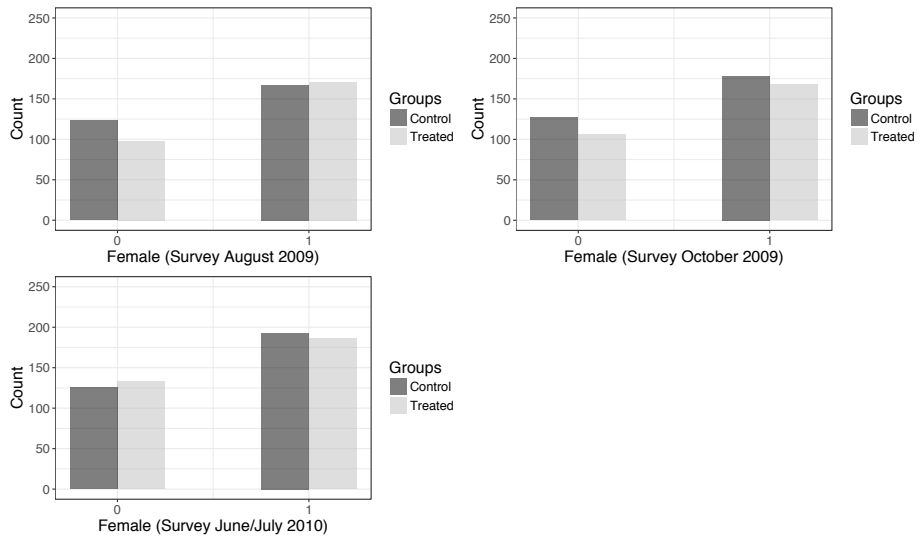


Figure A2: Gender

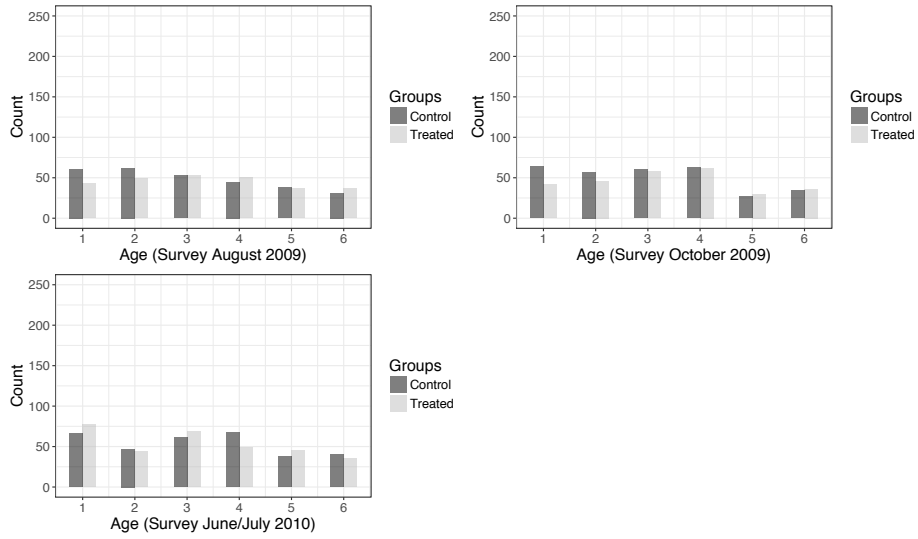


Figure A3: Age

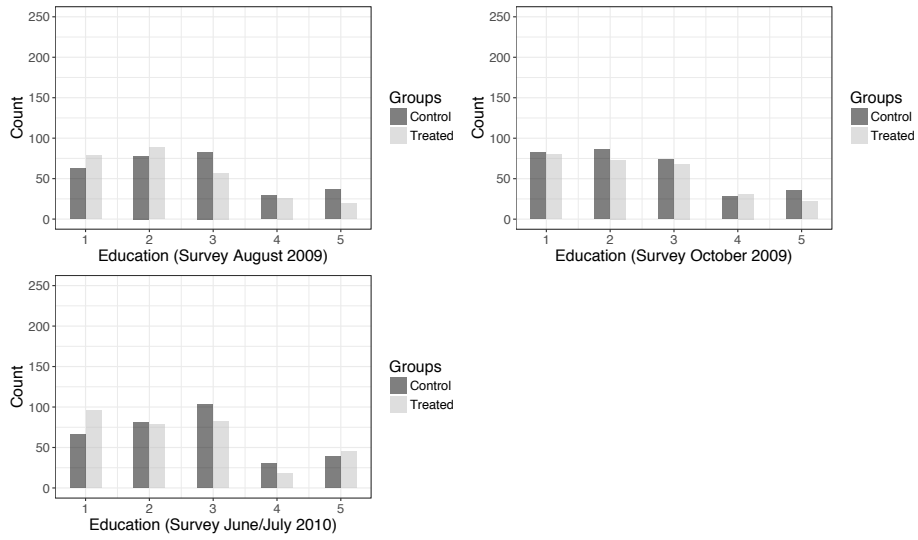


Figure A4: Education

2 Appendix B: Fine Balance After Matching

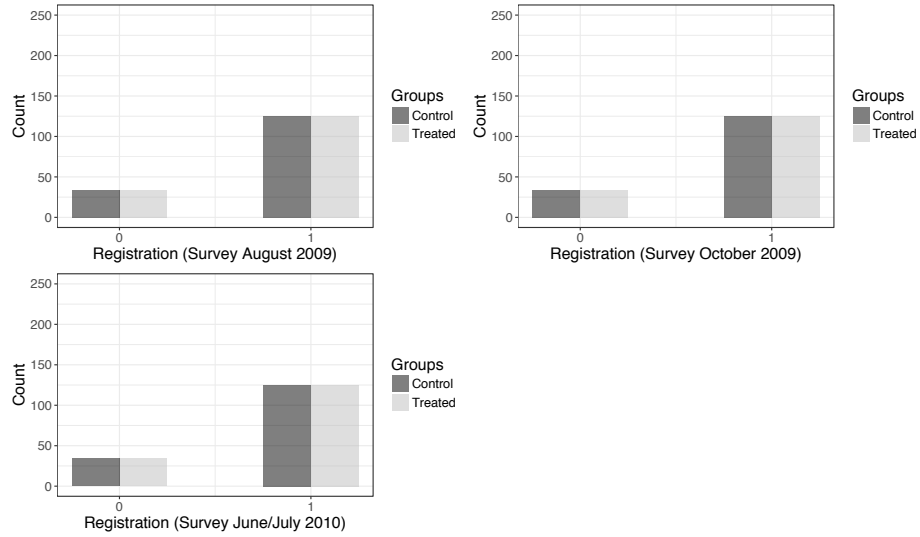


Figure A5: Registration

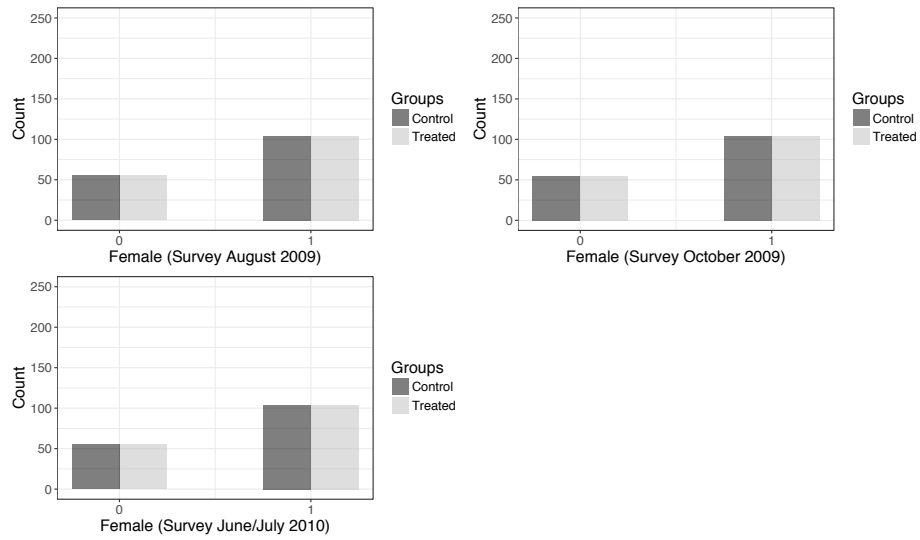


Figure A6: Gender

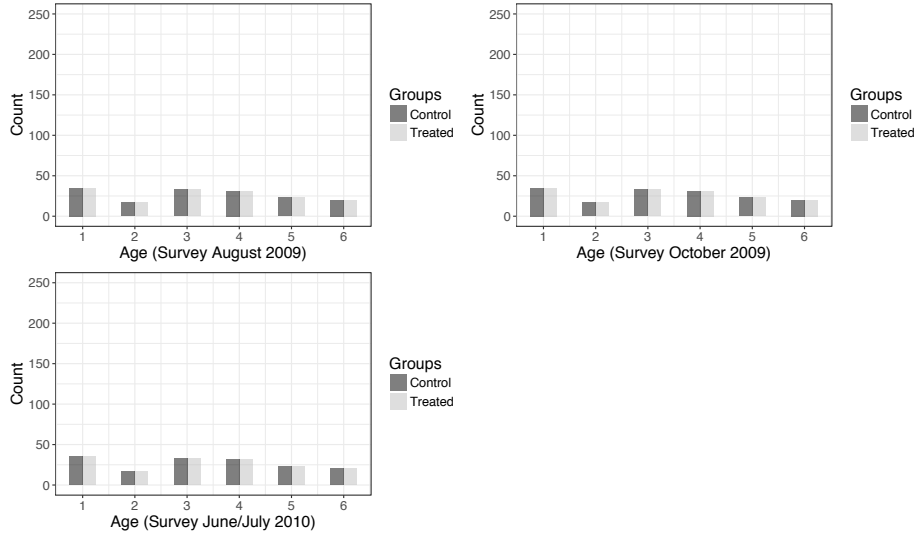


Figure A7: Age

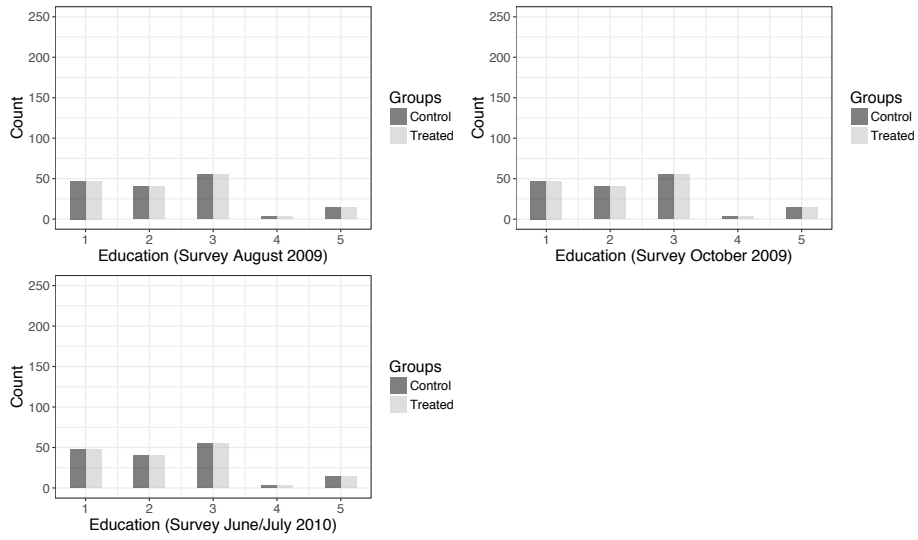


Figure A8: Education

3 Appendix C: Imbalances on Age

Table A1: Mean age (before matching)

Survey	Treated	Control
August 2009	3.372	3.103
October 2009	3.365	3.111
June/July 2010	3.144	3.263

Table A2: P-value age (before matching)

Surveys	Treated	Control
August 2009 - Survey October 2009	0.960	0.952
Survey August 2009 - Survey June/July 2010	0.096	0.231
Survey October 2009 - Survey June/July 2010	0.099	0.245

Table A3: Mean age (after matching)

Survey	Treated	Control
August 2009	3.314	3.314
October 2009	3.314	3.314
June/July 2010	3.314	3.314

Table A4: P-value age (after matching)

Surveys	Treated	Control
August 2009 - Survey October 2009	1	1
August 2009 - Survey June/July 2010	1	1
October 2009 - Survey June/July 2010	1	1

4 Appendix D: Imbalances on Education

Table A5: Mean education (before matching)

Survey	Treated	Control
August 2009	2.323	2.652
October 2009	2.423	2.502
June/July 2010	2.492	2.671

Table A6: P-value education (before matching)

Surveys	Treated	Control
August 2009 - Survey October 2009	0.339	0.154
August 2009 - Survey June/July 2010	0.108	0.852
October 2009 - Survey June/July 2010	0.518	0.096

Table A7: Mean education (after matching)

Survey August 2009	2.352	2.352
Survey October 2009	2.352	2.352
Survey June/July 2010	2.352	2.352

Table A8: P-value education (after matching)

Surveys	Treated	Control
August 2009 - Survey October 2009	1	1
August 2009 - Survey June/July 2010	1	1
October 2009 - Survey June/July 2010	1	1

5 Appendix E: Descriptive Statistics Before Matching

Table A9: Descriptive statistics before matching

Statistic	N	Mean	St. Dev.	Min	Max
Education	1,776	2.52	1.27	1	5
Age	1,776	3.22	1.63	1	6
Gender	1,776	0.60	0.49	0	1
Register	1,776	0.77	0.42	0	1

6 Appendix F: Descriptive Statistics After Matching

Table A10: Descriptive statistics after matching

Statistic	N	Mean	St. Dev.	Min	Max
Education	954	2.35	1.18	1	5
Age	954	3.31	1.67	1	6
Gender	954	0.65	0.48	0	1
Register	954	0.79	0.41	0	1